



T R A N S P O W E R

Formerly AOI 009

Paralleling Grid Exit Points

Document status: Approved

Implementation date: September 2010

COPYRIGHT © 2010 TRANSPOWER NEW ZEALAND LIMITED. ALL RIGHTS RESERVED.

This document is protected by copyright vested in Transpower New Zealand Limited ("Transpower"). No part of the document may be reproduced or transmitted in any form by any means including, without limitation, electronic, photocopying, recording or otherwise, without the prior written permission of Transpower. No information embodied in the documents which is not already in the public domain shall be communicated in any manner whatsoever to any third party without the prior written consent of Transpower.

Any breach of the above obligations may be restrained by legal proceedings seeking remedies including injunctions, damages and costs.

TP.AOI 07.110 Paralleling Grid Exit Points

N.B. Printed copy is valid on date of printing. Please check the Intranet for latest issue.

Table of Contents

Contents

Purpose 3
Changes in this revision 3
Background 3
External Policy/Rules or Regulations 3
Flag..... 3
Definitions 3
Outputs 3
Responsibilities..... 4
Procedures 4
References 5
Appendix A 7
Appendix B 8
Document Information 9

Purpose	To provide instruction to the Regional Operators on processing applications from Connected Parties to parallel Transpower Grid Exit Points (GXP's).
<hr/>	
Changes in this revision	<ul style="list-style-type: none"> • Added connected parties can access the document via the Transpower website with password log on. • Minor cosmetic • Changed EGR terms to the Electricity Industry Participants Code (Codes)
<hr/>	
Background	<p>Under the Electricity Industry Participation Code (Codes) the Distributor (Connected Party) must agree with the System Operator, situations where assets can either, temporarily or permanently, become simultaneously connected to the grid at more than one point of connection (Code Part 8 Schedule 8.3 tech code A 6).</p> <p>It is intended to capture and file pre-approved applications into a register held by the System Operator so the Connected Party will not have to go through an application process which requires engineering assessment and approval each time (see Appendix 2).</p> <p>However, there is an interim process to enable Connected Parties, Transpower Asset Owner and System Operator to process one off applications to parallel Transpower GXP's utilising Connected Parties' networks which have not been previously assessed and approved.</p>
<hr/>	
External Policy/Codes or Regulations	Electricity Industry Participants Code (Codes)
<hr/>	
Flag	Receipt of an application to parallel GXP's.
<hr/>	
Definitions	<p>For the purpose of this document refer to TP.OG 45.03 Defined Operating and Maintenance Terms.</p> <p>Under the Code, "Distributor" means any participant who owns or operates a local network and includes consumers with a point of connection to the grid.</p>
<hr/>	
Outputs	Risks to the operation and security of the grid are mitigated when Transpower GXP's are paralleled.

Continued on next page

-
- Responsibilities** The Regional Operator is responsible for:
1. Receiving the application to parallel GXP's from the connected party.
 2. Forwarding the application to the System Operator for assessment.
 3. Receiving notification from the System Operator that the application is approved or declined.
 4. Advising the connected party that the application is approved or declined.
- For non-approved parallels the Connected Party is responsible for sending applications to the Regional Operating Centre 14 days before paralleling is to occur to allow reasonable time for assessment.
- For pre-approved parallels the connected party is responsible for sending an application to the Regional Operator 1 day before parallel is to occur.
-

Procedures

Non-approved applications

Applications to parallel grid exit points which have not been previously approved. The following procedure is shown in Diagram 1.

The request to parallel two grid exit points is sent to the Regional Operating Centre using the form in Appendix A at least 14 days before the planned tie. The Connected Party is to include contact details of a person who can provide further information if required.

The Regional Operator will forward the application to the Operations Planning Engineers in Transpower. The Operations Planning Engineers will send the application through to the relevant Protection Engineer in Asset Management Engineering for their assessment. The Operations Planning Engineer will then carry out a security assessment for the paralleling request.

If the Protection Engineer requires more information from the Connected Party they will contact them directly using the contact details on the application form.

Once the protection assessment is complete they will advise the Operations Planning Engineer of either their agreement or non agreement to proceed with the paralleling.

The Operations Planning Engineer will then approve or decline the application based on the protection agreement/ non agreement and on their own security assessment. It may be necessary to have preconditions attached to the approval. These will be recorded with the agreement.

The Operations Planning Engineers will then notify the Regional Operating Centre that the application is approved or declined.

If the application is made less than 14 days before the planned tie or lacks sufficient information then the application may be declined.

The Regional Operator will notify the Connected Party that the application is approved, non-approved or declined.

Continued on next page

**Procedures
(Continued)**

Previously
approved
applications

Applications to parallel grid exit points which have been previously approved.
The following procedure is shown in Diagram 2.

The request to parallel two Grid exit points is sent to the Regional Operating Centre using the form in Appendix A, one business day before the planned tie. The Connected Party is to include contact details of a person who can provide further information if required.

The Regional Operator will forward the application to the Operations Planning Engineers in Transpower who will carry out a security assessment based upon the system conditions that exist on that day. It may be necessary to have preconditions attached to the approval. These will be recorded with the agreement.

The Operations Planning Engineers will then notify the Regional Operating Centre that the application is approved or declined.

The Regional Operator will notify the Connected Party that the application is approved or declined.

Upon approval, the connected party will on the day advise the RO immediately prior to the application of the tie, and after the removal of the tie.

References

- Electricity Industry Participants Code – Part 8, Schedule 8.3, Technical Code A, 6
- PR-EA-034 Process for Assessment of Parallel Grid Exit Point Applications
- GL-EA-011 Guideline for Parallel Grid Exit Point Connection

Continued on next page

Diagram 1

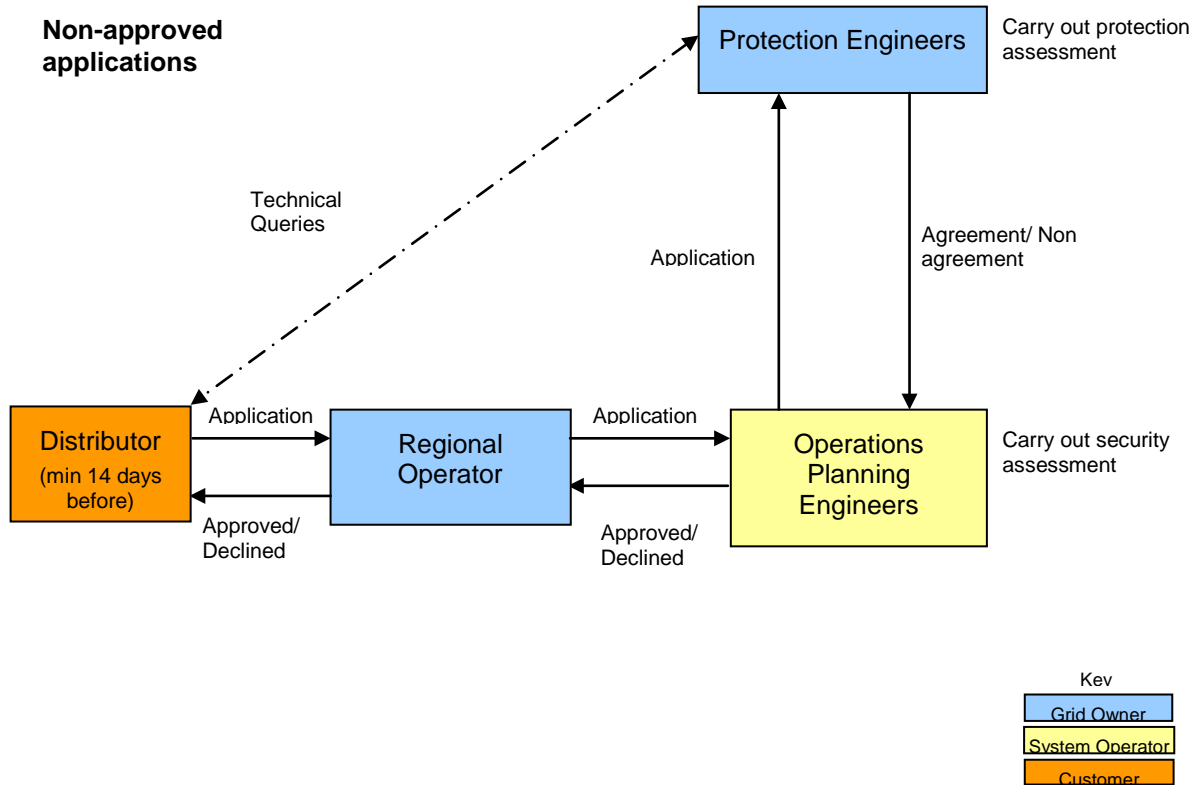
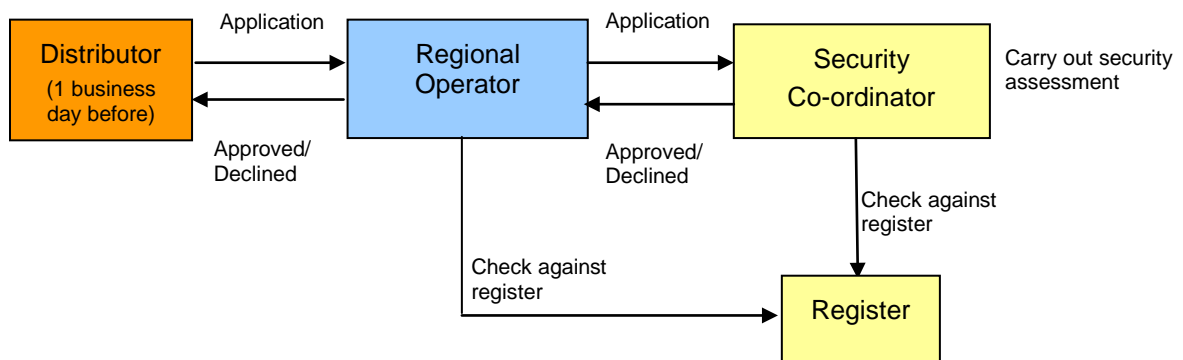


Diagram 2

Pre-Approved applications



Continued on next page

Appendix A



TRANSPOWER

FACSIMILE TRANSMISSION

To: Regional Operating Centre North /Central/South
Ph: 09 274 8736/04 563 5087/03 349 7043
Fax: 09 274 4020/04 569 2120/03 349 8506

From: Fax:

Date: Time Sent:

Subject: REQUEST FOR PERMISSION TO PARALLEL GRID EXIT POINT

The information contained in this facsimile message is CONFIDENTIAL INFORMATION and may also be LEGALLY PRIVILEGED, intended only for the individual or entity above. If you are not the intended recipient, you are hereby notified that any use, review, dissemination, distribution or copying of this document is strictly prohibited. If you have received this document in error, please notify us immediately by facsimile or telephone (call us collect) and destroy the original message.

Thank you.

Please confirm System Operator agrees to the following Grid Exit Points to be paralleled, temporarily:

GXP at: Tied to GXP at:

Tie via:

Date of Tie: From: To:

Approximate Time of Tie Application: From: To:

Approximate Time of Tie Removal: From: To:

Note: Network Control will notify RCN/RCC/RCS immediately prior to and immediately after tying.

Contact person for technical queries: Name:

Phone:

Reason For Tie:

TRANSPOWER AUTHORISATION

Permission: Granted Declined *

*Reason:

Name: Date:

Continued on next page

Appendix B

It takes some time to evaluate and process applications to parallel grid exit points and Transpower has limited resources to carry out the engineering assessments. It is therefore intended that Connected Parties begin to forward applications for all known or potential future paralleling requests directly to the Customer Relationship Manager. An indication of the priority order in which they wish their applications to be assessed should be given.

Approved applications will be notified to the connected party and filed in a register held by the System Operator and can be viewed on TP internet site "GXP Paralleling Customer Approvals" site <http://intranet.transpower.co.nz/SODocs>

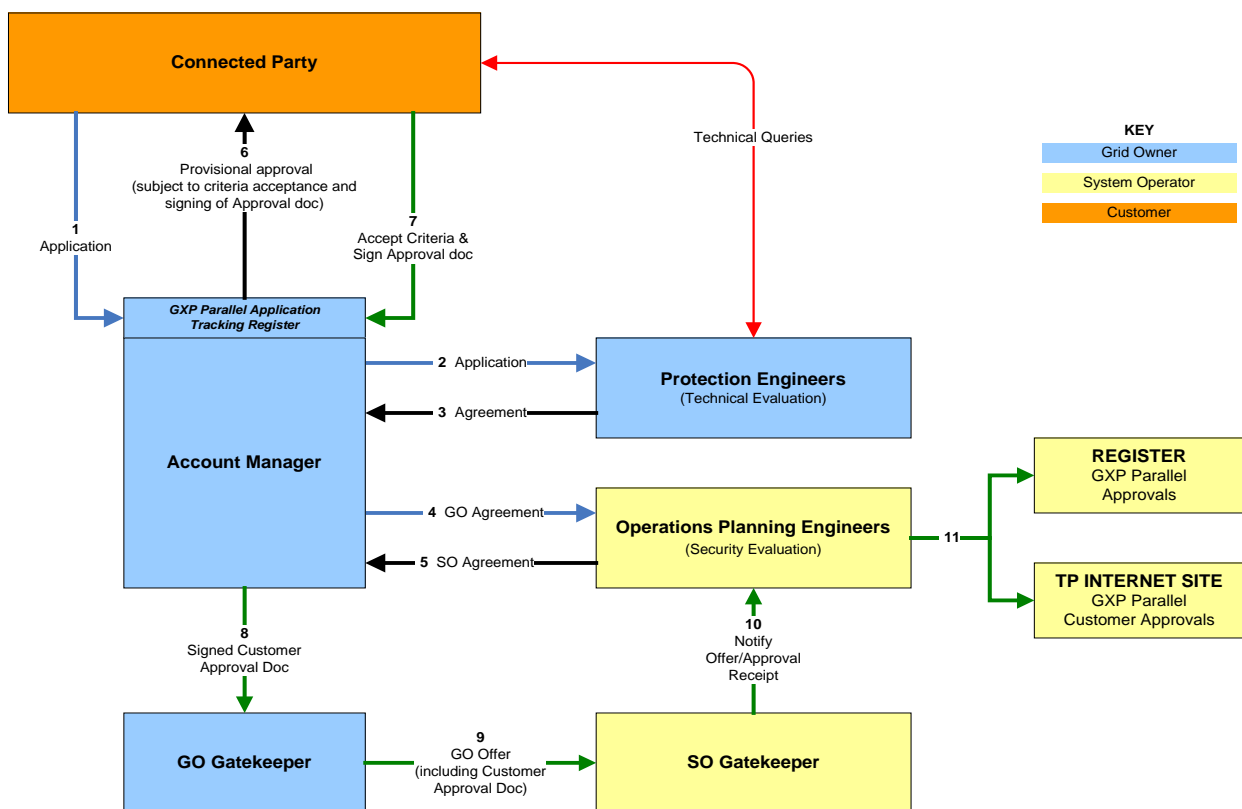
Connected parties can access this document via TP web page and password log on.

The process is shown in Diagram 3.

Once approved, the Connected Party will then follow the process as described in the section "Previously Approved Applications".

Diagram 3

GXP Parallel Application Process Chart
(for APPROVED register)



Continued on next page

Document Information**Document ID Information**

Document ID number: TP.AOI 07.110
Document Title: Paralleling Grid Exit Points
Document Type: Instruction
Issue no (version): 7
Document Status: Approved
Directory location: I:\Controlled_Documentation\ASSET OPERATIONS\Approved\AO Instructions

Document Category Structure

Main category: Operating & emergency management
Sub Category: Procedures, processes

Document Control

Prepared by: Jeff Farnworth
Reviewer: Jeff Farnworth
Approved by: Asset Operations Team Leader
Published Date: Sept 2010
Next Review: Sept 2012
Review Period: 24 months
Primary User Group: ROC
Secondary User Group(s)

Last page