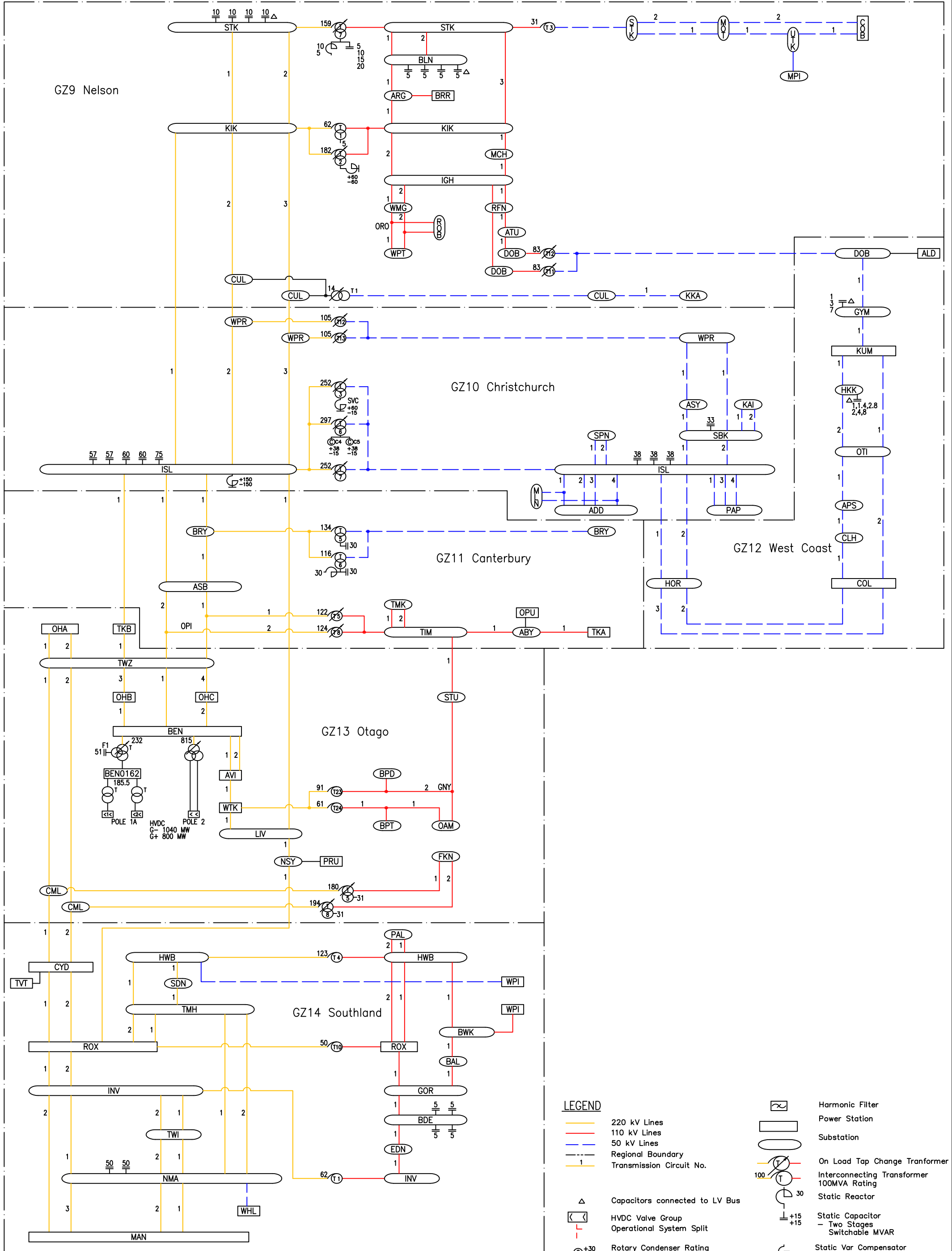


220 kV

110 kV

66 kV



LEGEND

- 220 kV Lines
- 110 kV Lines
- 66 kV Lines
- 50 kV Lines
- Regional Boundary
- 1 Transmission Circuit No.
- Capacitors connected to LV Bus
- HVDC Valve Group
- Operational System Split
- Rotary Condenser Rating  
-15 to +30 MVAR
- Harmonic Filter
- Power Station
- Substation
- On Load Tap Change Transformer
- Interconnecting Transformer  
100MVA Rating
- Static Reactor
- Static Capacitor  
- Two Stages  
Switchable MVAR
- Static Var Compensator